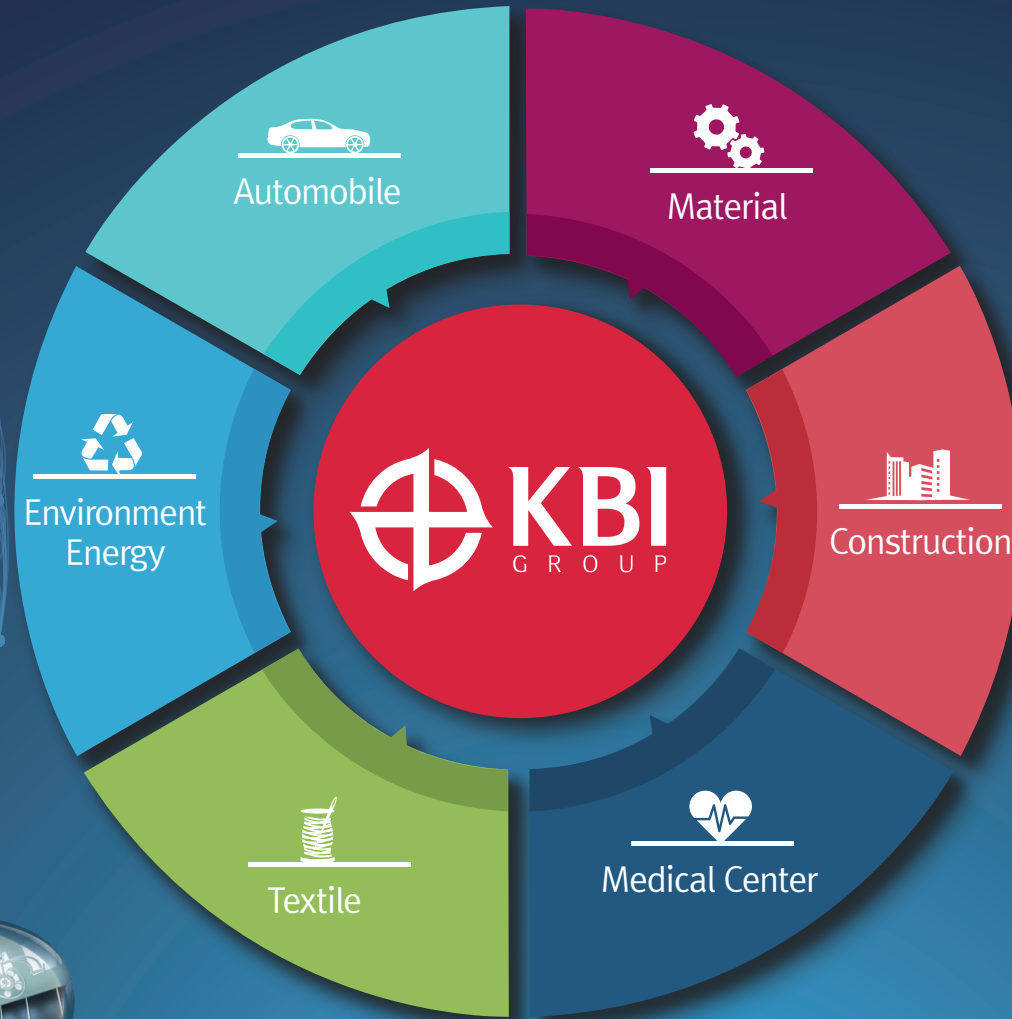




Group Overview



Group History



Leaping	2007 – Current	2007. 01	YANCHENG DONGKOOK, CHINA established (YANCHENG DONGKOOK AUTO PARTS Co., Ltd.)	2013. 03	COSMOLINK acquired	 
		2007. 08	KBI JAPAN founded	2013. 04	MB SEONGSAN (Name changed to KB METAL)	
		2008. 02	KB REMICON founded (U.A.E.)	2013. 09	GERMANY ICT acquired (Name changed to KDK AUTOMOTIVE)	
		2008. 09	YOUNGIL NON-FERROUS METALS Co., Ltd. acquired	2014. 05	DONGKOOK IND. Co., Ltd. ASAN FACTORY #2 constructed	
		2009. 12	MODINE KOREA acquired (Name changed to KB AUTOTECH)	2014. 08	SEOKMUN ENERGY acquired	
		2009. 12	EJOEUN JUNGANG HOSPITAL acquired (Name changed to KB JANGYU HOSPITAL)	2016. 01	YOUNGIL NON-FERROUS METALS Co., Ltd. (Name changed to KB ALLOY)	
		2010. 01	KB MEDICAL FOUNDATION founded	2016. 05	KB INTERNATIONAL IRAN BRANCH founded	
		2010. 12	MB SEONGSAN acquired	2017. 01	SH VINA CABLE acquired (Name changed to COSMILINK VIETNAM)	
		2011. 12	NOKSAN HANMAEUM HOSPITAL acquired (Name changed to KB NOKSAN HOSPITAL)	2017. 04	DONGKOOK MEXICO founded	
		2012. 01	KB GUMI HOSPITAL founded	2019. 01	KB INTERNATIONAL GROUP (Name changed to KBI GROUP)	
Changes	1996 – 2006	1996. 05	HANJIN PLASTIC IND. acquired (Automobile components manufacturing)	1998. 11	DONGKOOK IND. Co., Ltd. ASAN FACTORY #1 constructed	
		1996. 11	KUKIN IND. Co., Ltd. founded	2001. 08	DONGYANG STEEL PIPE Co., Ltd. acquired	
The 2nd Foundation	1987 – 1995	1987. 03	Business separation (KABUL GROUP/KB INTERNATIONAL GROUP)	1990. 09	DONGKOOK IND. Co., Ltd. listed on stock exchange	
		1987. 03	KB SYNTHETICS founded	1994. 05	DONGWOON IND. acquired (Name changed to KB TECH)	
Growth	1975 – 1986	1977. 01	KABUL BUILDING constructed	1978. 11	KBI CONSTRUCTION Co., Ltd. founded	
Foundation	1955 – 1974	1955. 12	DONGKOOK IND. Co., Ltd. founded	1974. 05	KABUL founded	
		1956. 07	SHINHAN SILK Partnership Company founded			

Group Affiliate Status



Automobile

KBI DONGKOOK IND.
KDK AUTOMOTIVE
KB AUTOTECH
KBI ACETECH
MODA



Material

DONGYANG STEEL PIPE
KBI METAL
KBI COSMOLINK
KBI COSMOLINK VINA CABLE
KBI ALLOY



Construction & Real Estate

KBI CONSTRUCTION
KB REMICON
KB INTERNATIONAL
KBI JAPAN



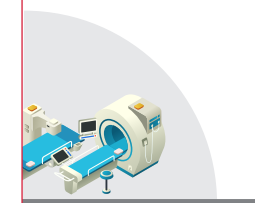
Textile

KB SYNTHETICS



Energy & Environment

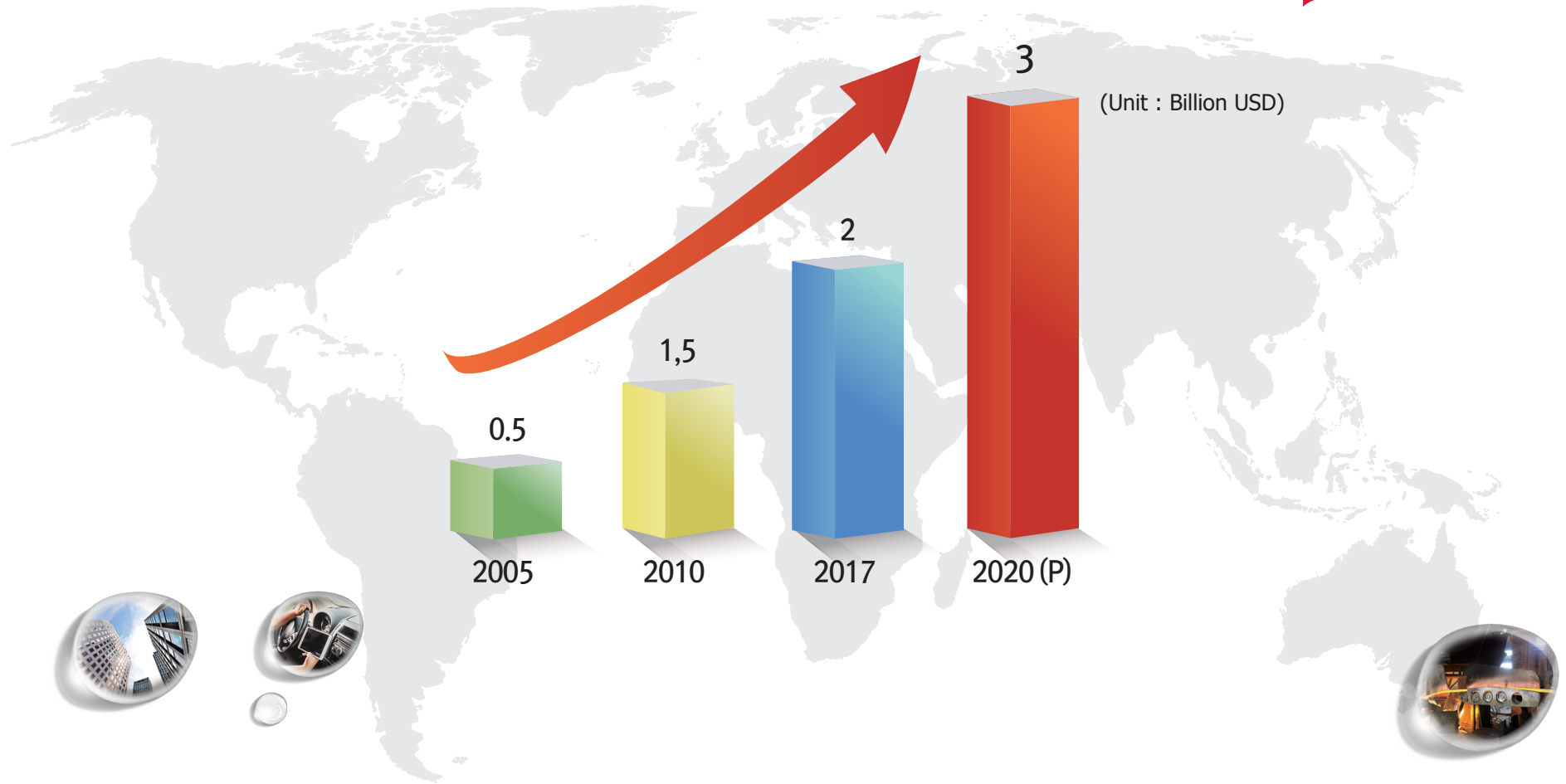
KBI KUKIN IND.
KBI TECH
SEOKMUN ENERGY



Medical

KB MEDICAL FOUNDATION
– KB JANGYU HOSPITAL
– KB NOKSAN HOSPITAL
– KB GUMI HOSPITAL

Group Revenue



Sector	Automobile	Material	Construction	Environment / Energy / Medical / Textile	Total
FY 2017 Revenue Million USD (Revenue portion %)	900 (45%)	800 (40%)	100 (5%)	200 (10%)	2,000 (100%)

KBI DONGKOOK IND.

www.dongkook.net

Year of Establishment 1955
Revenue (unit : Million USD) 420
Employees 2,000



Manufacturer of automotive interior & exterior components, air conditioning and lamp-related parts

Domestic Sites

ASAN FACTORY #1



Main products : GLOVE BOX, LUGGAGE BOARD

ASAN FACTORY #2



Main products : CRASH PAD MAIN, CONSOLE

ULSAN FACTORY



Main products : CRASH PAD MAIN, GLOVE BOX

GYEONGJU FACTORY



Main products : LUGGAGE BOARD

Overseas Sites

CHINA YANCHENG FACTORY



Main products : CRASH PAD MAIN, LAMP

MEXICO HUSKERIA FACTORY



Main products : CRASH PAD MAIN, LAMP

Major Clients



KBI DONGKOOK IND.

Interior Components



ASSIST HANDLE



CRASH PAD MAIN



CLUSTER FACIA



NOZZLE DEFROSTER



CRASH PAD LWR



CONSOLE



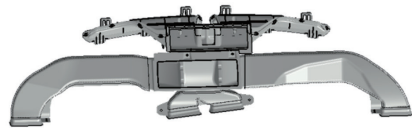
GLOVE BOX



Exterior Components



CONNECTION DUCT



COWL TOP COVER



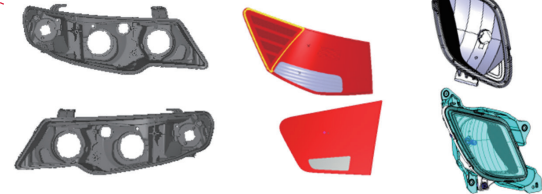
CARRIER



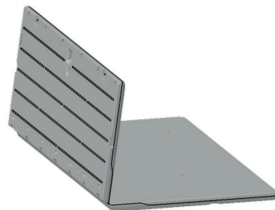
NOZZLE DEFROSTER



LAMP



LUGGAGE BOARD



RESERVOIR



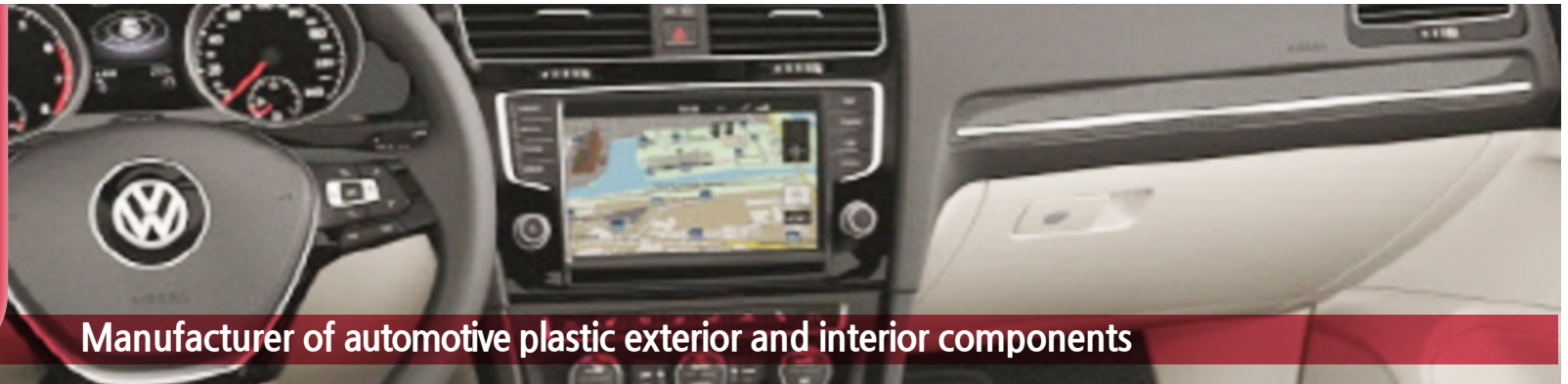
KDK AUTOMOTIVE

www.kdkautomotive.com

Year of Establishment 1935

Revenue (unit : Million USD) 300

Employees 1,000



Manufacturer of automotive plastic exterior and interior components



Sites

GERMANY LENNESTADT FACTORY (HQ)



Mail Products : CONSOLE, IMD

GERMANY WACHTERSBACH FACTORY



Mail Products : CONSOLE, PILLAR

CZECH REPUBLIC TACHOV FACTORY



Mail Products : CONSOLE, PILLAR

SPAIN BORJA FACTORY



Mail Products : TRIM, DECO

Main Products

CONSOLE



Major Clients



KB AUTOTECH

www.kbautotech.com

Year of Establishment 1962

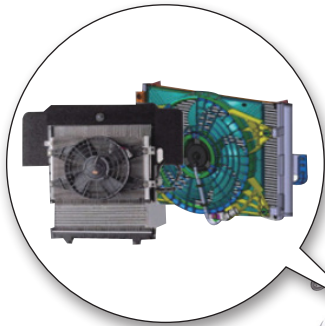
Revenue (unit : Million USD) 250

Employees 600

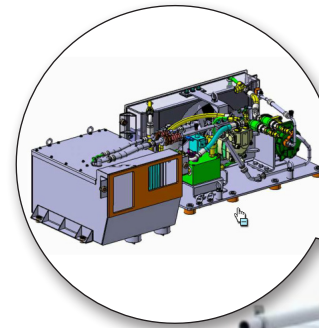
Sites : ASAN (KOREA), CHENNAI (INDIA)

Manufacturer of vehicle air conditioning and heat exchanging systems

Main Products



Automobile air conditioning system



Military vehicles (Tank, Armored car) air conditioning system



Train air conditioning system



Major Clients



Mercedes-Benz

KBI ACETECH

Year of Establishment 2013
Revenue (unit : Million USD) 30
Employees 130
Sites : ASAN (KOREA)



Manufacturer of automotive interior and exterior components and the tools

Main Products



Major Client

HYUNDAI
MOBIS

MODA

Year of Establishment 2015
Revenue (unit : Million USD) 17
Employees 50
Sites : ASAN (KOREA)



Manufacturer of ATF (Automatic Transmission Fluid) warmer

Main Products

ATF WARMER



Improves fuel efficiency by raising the temperature of transmission oil



DONGYANG STEEL PIPE

www.dysp.co.kr

Year of Establishment 1973

Revenue (unit : Million USD) 120

Employees 200

Global manufacturer of large diameter steel pipes (water, oil & gas and structural pipes, coated pipes)

Sites

SEOUL OFFICE (KB BUILDING)



CHEONAN FACTORY



CHUNGJU FACTORY



Main Products

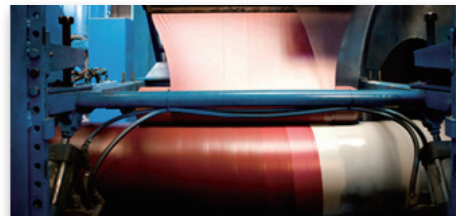
Line pipe for oil and gas



Heavy wall pipe for offshore, construction



Extruded polyethylene 3-layer coated pipes



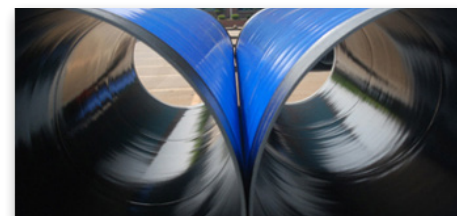
Various pipe lines



Pipe pile for foundation



Coated water pipe



Major Clients



KBI METAL

www.kabulmetal.co.kr

Year of Establishment 1985

Revenue (unit : Million USD) 460

Employees 220

Sites : SEOUL, EUMSEONG, DAEGU

Manufacturer of copper rods (ICR) for electric wires & automotive electronic components

Metal Division

Main Products

JCR Scrap (60,000t/year)



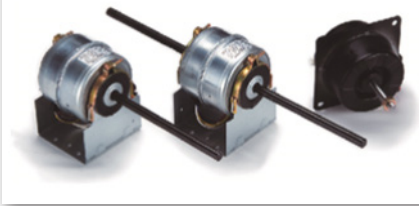
Major Clients



Electric Components Division

Main Products

AC MOTOR



STARTER MOTOR



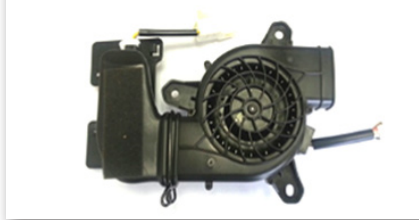
VENTILATION BOOSTING MODULE



ALTERNATOR



SEAT VENTILATION HEATING MODULE



MOTOR CORE



Major Clients



BorgWarner



두산인프라코어



KBI COSMOLINK

www.cosmolink.co.kr

Year of Establishment 1965
Revenue (unit : Million USD) 120
Employees 160

Manufacturer of power, telecommunication and machinery line cables

Sites

SEOUL OFFICE (KB BUILDING)



OKCHEON FACTORY



Capa 66kV ~ 600kV

Major Clients

 한국전력공사 **SAMSUNG** 아이마켓코리아

Main Products



PVC insulated wires



Flame retardant control & power cables



Fire resistant cables



Bare conductors



MV URD (Underground Residential Distribution) cables



Processed transmission and distribution : Paddy lines



3-layer insulated wires

KBI COSMOLINK VINA CABLE

Year of Establishment 2004
Revenue (unit : Million USD) 15
Employees 90

Manufacturer of power, telecommunication and machinery line cables

Sites

HANOI OFFICE



VINH YEN FACTORY (VINH PHUC)



Major Clients

SAMSUNG

posco
E&C

VIETNAM ELECTRICITY
EVN
Enlightening Trust

HOA PHAT

Main Products

BUILDING WIRES



ACSR CABLES



COPPER CABLES



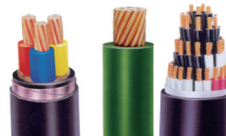
ABC CABLES



AI CABLES



CV, GV CABLES



AV CABLES



COMMUNICATION WIRES



3-LAYER INSULATED WIRES



INSTRUMENT WIRES



KBI ALLOY

www.kbialloy.com

Year of Establishment 1963

Revenue (unit : Million USD) 30

Employees 70

Sites : SEOUL, ASAN

Manufacturer of specific purpose copper alloy materials and parts

Main Products

Spot Resistance Welding Alloys



Rod Wire for Cap-tip for Automobile Spot-welding and Co2-Tip for Welding Big Ship



Billet and Bare Wire for Aircraft Wire



Major Clients



KBI CONSTRUCTION

www.kbconst.co.kr

Year of Establishment 1978

Revenue (unit : Million USD) 80

Employees 80

Sites : SEOUL (HQ)

Civil engineering, contract work and plant construction company

Main Business

Roads and highways



West Suwon-Uiwang road

Railroad



KTX 11-1 section Establishment of roadbed

Residences



Godeok station KB Myungga City

Educational facilities



Dogok library

Business facilities



Gasan KB Great valley

Ports



Pohang Yeongil bay breakwater

Plants



Gyeongju sewage treatment facility

Overseas



Laos GMS road improvement

KB REMICON

www.kbremcon.ae

Year of Establishment 2008

Revenue (unit : Million USD) 23

Employees 110

Manufacture of ready-mix concrete

Site

AJMAN PLANT (U.A.E.)



Main Business



KB INTERNATIONAL

Year of Establishment 1970
Revenue (unit : Million USD) 3
Employees 10

Domestic real estate investment & development

Main Business

Real estate lease and building management



KB International Group's HQ (KB building)



Gunpo plant

KBI JAPAN

www.kbijapan.com

Year of Establishment 2007

Revenue (unit : Million USD) 10

No. of employees 40

Site : JAPAN

Real estate investment & development, and hospitality management in Japan

Main Business

Real estate lease & building management



Sanco building (Japan office)

Shimbashi building

Hospitality

Golf Resorts



Yabuki Golf Resorts



Souen Golf Resorts

Spa



Spa Japan (Souka) – Front View



Spa Japan (Souka) – Inside View

KB SYNTHETICS

www.kbsyn.co.kr

Year of Establishment 1990

Revenue (unit : Million USD) 42

Employees 15

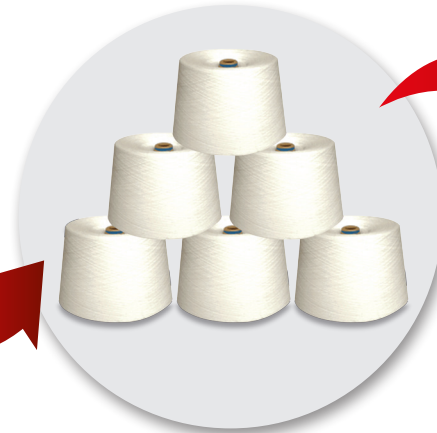
Sites : SEOUL

Distributor of textile yarns

Main Products



- POLY-RAYON
- POLY
- RAYON
- VISCOSE FILAMENT
- POLY-COTTON



Major Clients



삼성물산



CHONBANG



일신방직

KBI KUKIN IND.

www.kukin.co.kr

Year of Establishment 1996

Revenue (unit : Million USD) 40

Employees 70



Largest domestic incinerator and landfill operator & supplier of renewable energy

Sites

GUMI PLANT



GUNSAN PLANT



Main Business

Incineration & Steam Generation



- Sector : Interim disposal
Sales of heat & steam
- Volume : Incineration - 200t/day
Steam - 250,000t/yr
- Item : General and hazardous industrial waste

Landfill



- Sector : Final disposal
- Capacity : 6.9 mil. m³
- Item : General and hazardous industrial waste

Major Clients

HYOSUNG

삼성코닝정밀유리 **SAMSUNG**

LG LG디스플레이

Youngdo Velvet

SK 실트론

KBI TECH

www.ikbtech.com

Year of Establishment 1982

Revenue (unit : Million USD) 22

Employees 45

Incinerator & supplier of renewable energy

Site

INCHEON PLANT (HQ)



Main Business

Waste Hauling Business



- Sector : Collection and transportation of waste
- Coverage area : Nationwide



Incineration & Steam Generation



- Sector : Interim disposal
Sales of heat & steam
- Volume : Incineration - 150t/day
Steam - 200,000t/yr
- Item : General and hazardous industrial waste

Major Clients

coway
EnTech

청라에너지주식회사

경인양행
KISCO
CREATING COLORS AND CHEMICAL SOLUTIONS

(주)유성화학
YOUSUNG CHEMICAL CO.

SEOKMUN ENERGY

www.smep.co.kr

Year of Establishment 2013

Revenue (unit : Million USD) 45

Employees 50

Supplier of biomass combined heat and power

Site

DANGJIN



Electricity generation capacity : 38.9 MW

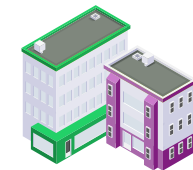
Main Business



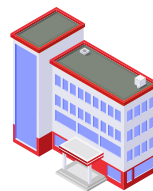
Dangjin Thermal Power Plant

Heat supply
(Since 2018)

Heat and steam sales
(84% of total load)



Industrial complex



Korea Power Exchange

Electricity sales
(Since 2016)



SEOKMUN combined heat & power plant

Heat sales
(16% of total load)



Residential complex

Recycled fuel (Wood chips)



Major Clients



KB HOSPITAL

www.kbhospital.com

Revenue (unit : Million USD) 50
Employees 450



Healthcare provider of the local communities

Sites

One and only general hospital in Jangyu



KB JANGYU HOSPITAL

Establishment 2006

167-13, Jangyu-ro, Jangyu-myeon, Gimhae-si,
Gyeongsangnam-do, Korea

Provider of healthcare and specialized checkups
for the nearby industrial complex



KB NOKSAN HOSPITAL

Establishment 2011

24-8, Noksan Industrial Complex 321-ro,
Gangseo-gu, Busan, Korea

Rehabilitation center for acute nervous system
disorders



KB GUMI HOSPITAL

Establishment 2012

280-3, 3 Industrial Complex 1-ro, Gumi -si,
Gyeongsangbuk-do, Korea



Official contractor of medical
hotline with 4 major
university hospitals in Korea



SNUH
서울대학교병원

SAMSUNG
삼성서울병원



세브란스병원
SEVERANCE HOSPITAL

Global Network

